

NORLINGE

Équipement textile professionnel

Informations techniques :

Black out / occultant enduit

- Composition : 100% polyester + acrylic blackout coating
- Largeur : 290 cm
- Format : roulé sur grande laize
- Poids : 410 gr/m²
- Longueur du rouleau : 30 m

Classement au feu M1

Lavage machine 30°, chlorage interdit, séchage machine interdit, repassage autorisé, nettoyage à sec possible

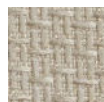
STRATA



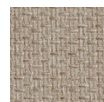
Coloris :



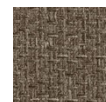
ivory



pearl



pebble



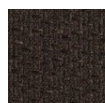
twine



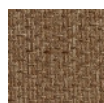
pepper



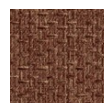
cocoa



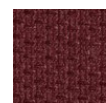
espresso



straw



ginger



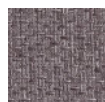
rouge



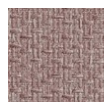
aubergine



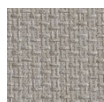
beetroot



thistle



blush



ash



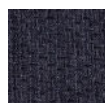
pewter



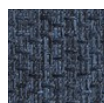
raven



mercury



midnight



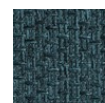
indigo



cerulean



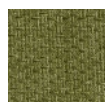
mineral



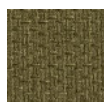
teal



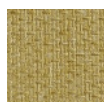
forest



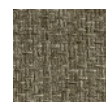
kiwi



pistachio



tarragon



caper

NORLINGE - S.A.S au capital de 500 000 euros

Siret 315 014 712 00030 - SIREN 315 014 712 - TVA intracommunautaire

FR 17 315 014 712 - APE 172A