

NORLINGE

Rideaux/Stores, Literie, Linge

Informations techniques :

Blackout / occultant

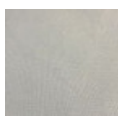
- Composition : 100% polyester FR + Acrylic coating
- Largeur : 300 cm
- Format : roulé sur grande laize
- Poids : 350 gr/m²
- Longueur du rouleau : 28 cm

Classement au feu M1

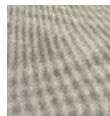
Lavage machine 30°, chlorage interdit, séchage machine interdit, repassage autorisé, nettoyage à sec possible

LISBOA

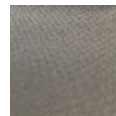
Coloris :



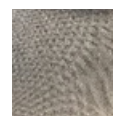
4331



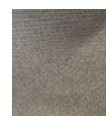
4332



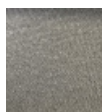
4333



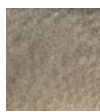
4335



4336



4337



4338



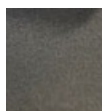
4339



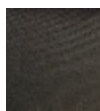
4340



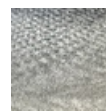
4341



4342



4343



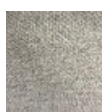
4345



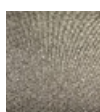
4346



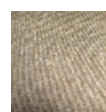
4347



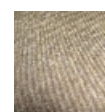
4348



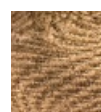
4349



4350



4351



4352



4353



4354

NORLINGE - S.A.S au capital de 500 000 euros

Siret 315 014 712 00030 - SIREN 315 014 712 - TVA intracommunautaire

FR 17 315 014 712 - APE 172A