

NORLINGE

Équipement textile professionnel

Informations techniques :

Black out / occultant

- Composition : 52% polyester RECYCLED + 48% polyester FR + Acrylic coating
- Largeur : 300 cm
- Format : roulé sur grande laize
- Poids : 330 gr/m²
- Longueur du rouleau : 25 cm

RIVOLI

Classement au feu M1

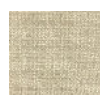
Lavage machine 30°, chlorage interdit, séchage machine interdit, repassage autorisé, nettoyage à sec possible



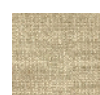
Coloris :



0750



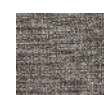
0751



0752



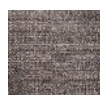
0753



0754



0755



0756



0757



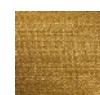
0758



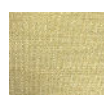
0759



0760



0761



0762



0763



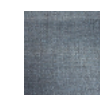
0764



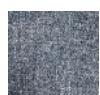
0765



0766



0767



0768



0769



0770



0772

NORLINGE - S.A.S au capital de 500 000 euros

Siret 315 014 712 00030 - SIREN 315 014 712 - TVA intracommunautaire

FR 17 315 014 712 - APE 172A